

Barrett Xplore Inc.

Understanding Xplornet Webmail 5.5 changes

Version: 01.01

Effective: July 23, 2009



Understanding Xplornet Webmail changes

Xplornet strives to improve your Internet experience so that you stay at the forefront of technology and innovation. On **July 23 2009**, Xplornet's email provider is adding new features and functionality to your existing email service. For more information about these changes, see the following sections:

- [Improved Basic interface](#)
- [Improved overall speed and responsiveness](#)
- [Dashboard usability improvement](#)
- [Folder icons](#)
- [Message list enhancements](#)
- [Improved Search functionality](#)
- [Full message source viewer](#)
- [Improved email composition tools](#)
- [Address Book enhancement](#)
- [General Settings enhancements](#)
- [Mail Settings](#)

Improved Basic interface

The Basic Interface now supports all features of the Standard Interface with the exception of the RSS Feed Reader. The Basic Interface now also includes a rich text editor and spell checker. The rich text editor is automatically enabled; you can turn it off by using the Plain Text option (see Figure 1). The spell checker is available using the ABC button.

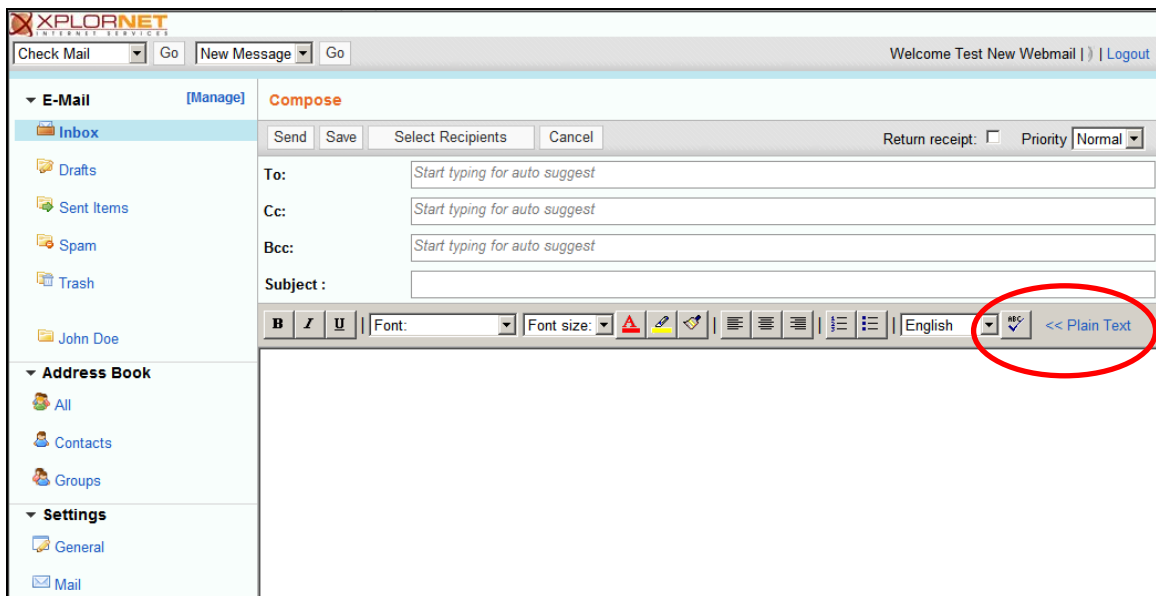


Figure 1 Basic interface Compose window

Updates to the rich text editor include the ability to:

- Change the font and font size
- Change the font color
- Highlight text
- Erase formatting

Improved overall speed and responsiveness

Webmail now runs faster across different browsers and for users with slower connections. The improvement is felt across all browsers, but is most noticeable on Internet Explorer and for users with many emails in their mailboxes.

Dashboard usability improvement

In the Standard interface, a new double-arrow button hides and restores the left-hand folder pane area (see Figure 2).

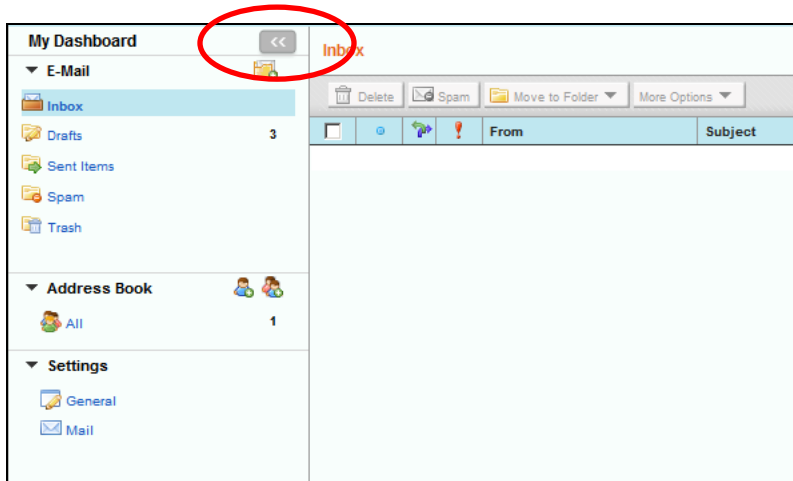


Figure 2 My Dashboard view

Folder icons

Core folders now have icons that make them easier to identify (see Figure 2).

Message list enhancements

The following list summarizes enhancements to the message list (see Figure 3):

- Reply-to and Forward flags, and the ability to flag or unflag an email, are now available.
- The Block and Safe Sender functions are moved to the "More Options" menu.
- A Message-ID column heading and sort option is added. The newer the message, the higher the ID it receives.
- The Attachment column is moved to the right side of the message index.

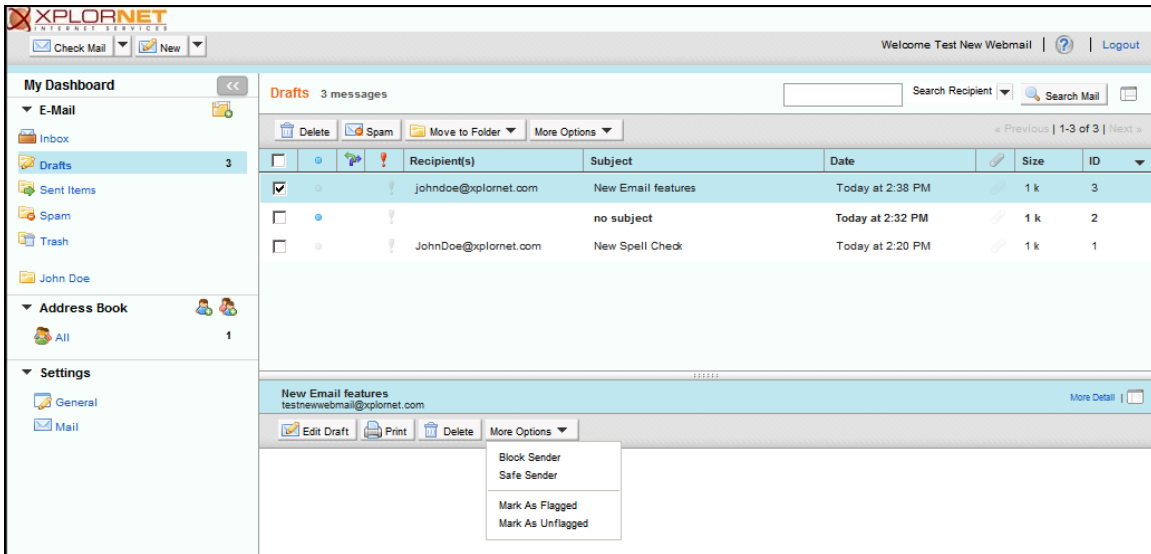


Figure 3 Message list options

Improved Search functionality

Users can now choose to search by sender, subject, message headers, or message bodies (see Figure 4). The default is to search by message header.

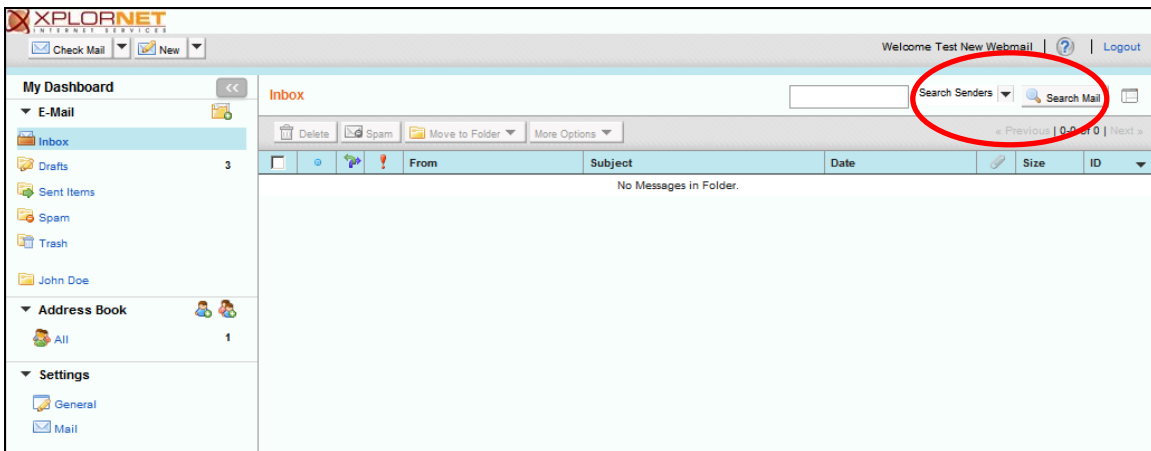


Figure 4 Search functions

Full message source viewer

Users can now view the full, raw source of a message, rather than just the headers. Also, when replying to an externally received POP message, you can change the "From" setting.

Improved email composition tools

Many improvements have been added to email functionality (see Figure 5):

- Users can now request a "read receipt" when sending a message.
- Users can now set a message priority when composing and sending email.
- An auto-save feature is added. It automatically saves a composed message as a draft.

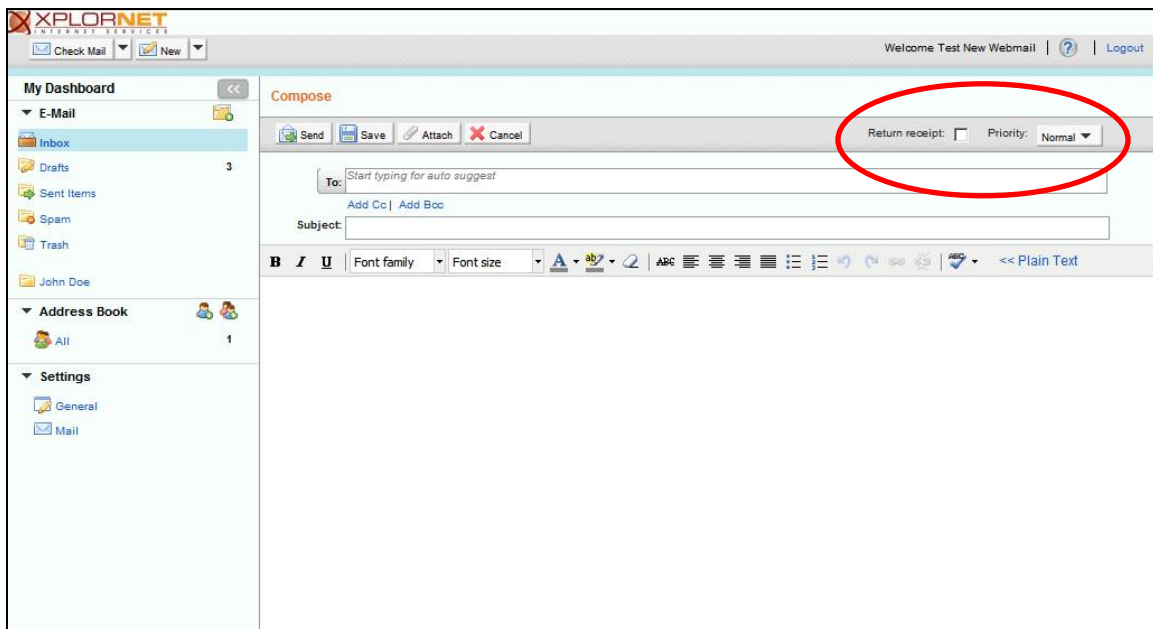


Figure 5 Compose window

Address Book enhancements

Mozilla Thunderbird address books can now be imported into Webmail, as well as exported (see Figure 6).

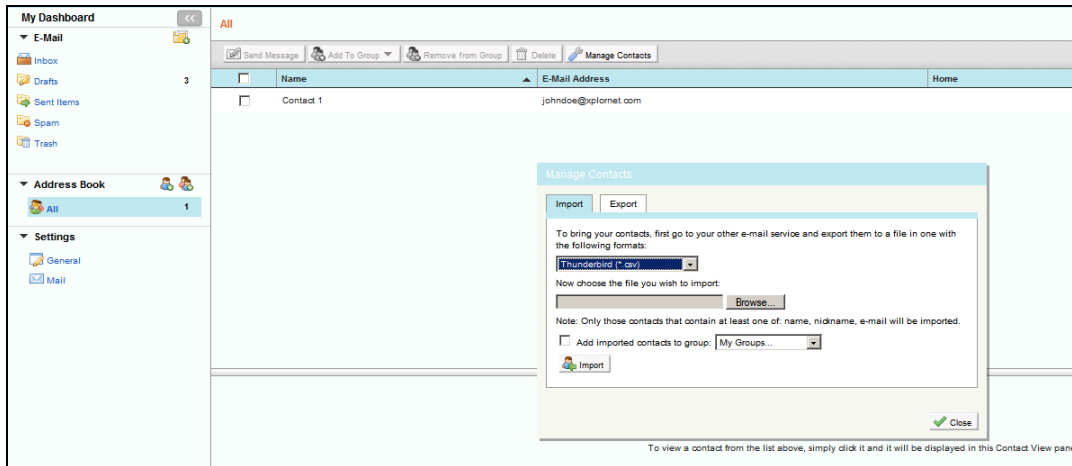


Figure 6 Address book window

The Export/Import feature is now accessed through the Manage Contacts button.

General Settings enhancements

The Interface Preferences and Display Preferences options are now combined under a single tab called Display Preferences (see Figure 7).

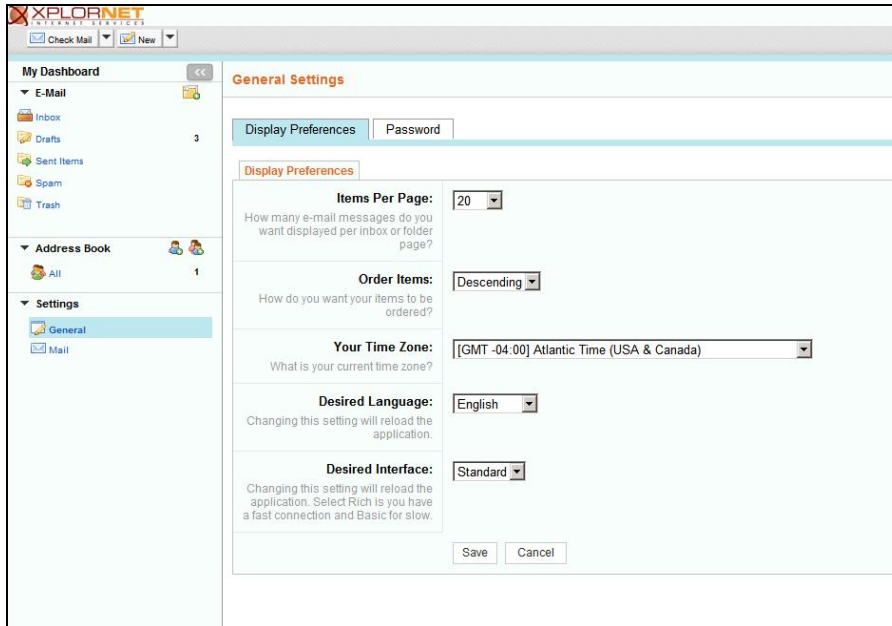


Figure 7 Display Preferences window

Mail Settings

When using a third-party client, for added security, you can enable SSL for POP3 mail fetching.

The Sender List tab is now named Blocking tab (see Figure 8). In this tab, you can use the following rules:

- `user@domain.com` — blocks this email address only
- `user*@domain.com` — blocks all email addresses from domain.com starting with *user*
- `*@domain.com` — blocks all email addresses from domain.com
- `*domain.com` — blocks any email address and domain from domain.com

Mail Settings

Setup | Vacation | Signature | **Blocking** | Filters | POP

E-Mail Blocking

Block Senders List
Enter an e-mail address or domain name to be added to the list. Domain names require an asterisk (e.g. *example.com).

Add

To remove an e-mail address or domain from the Block Senders List, select the item, and then click the **Remove** button.

Remove

Safe List
Use the Safe List for those e-mail addresses and domains from which you always want to accept e-mail.
Enter an e-mail address or domain name to be added to the

Figure 8 Blocking tab